



■■■ ergonomics product catalogue

www.fluteline.co.nz

■■■ *specialising in ergonomics*



Footrests

Small
Large
Curved
Drafting

Monitor Stands

Small
Large
Corner

Desk Raisers

Roll Step

Sheepskin Chair Covers
Better fit & medical benefits

Chair Mats

Microdesk

Regular
Compact
Step

Winmac

Letter Trays
Stationary Cabinets
Lever Arch Storage

Fluteline Bins

6 standard colours
Special colours available

Seminars

Prevention of back injuries

Mission Statement

Fluteline Office Products Ltd is committed to producing cost effective, high quality, user trialled and tested ergonomic office products, whilst also providing the best possible service by constantly revising our products to meet the changing workplace and client requirements.

Fluteline works in association with Professor Terry Cunniffe, a leading ergonomic consultant who has been awarded Patron Membership of the New Zealand Ergonomic Society.

Fluteline also networks with other office chair and furniture manufacturers who are proactive in trialling and testing the ergonomics of their products.

Environmental Policy

Fluteline Office Products Ltd. believes we have a responsibility to care for and protect the environment in which we operate. We are fully committed to improving environmental performance across all of our business activities, and will encourage our business partners and members of the wider community to join us in this effort.

Fluteline Office Products Ltd. recognises our key impacts to be in the areas of; energy use, raw material use, waste generation, emissions to air/water, water use, transport, procurement .

We will strive to:

- Adopt the highest environmental standards in all areas of operation.
- Meeting and exceeding all relevant legislative requirements.
- Minimize waste through careful and efficient use of all materials and energy.
- Purchase sustainable products wherever feasible [e.g. recycled, FSC or low environmental impact products and energy from renewable sources].
- Publicize our environmental position.
- Train employees in good environmental practice and encourage employee involvement in environmental action.
- Reduce risks from environmental, health or safety hazards for employees and others in the vicinity of our factory including our neighbours.
- Adopt an environmentally sound transport strategy.
- Aim to include environmental and ethical considerations in investment decisions where appropriate.
- Assist in developing solutions to environmental problems.

Fluteline Office Products Ltd will periodically review our environmental impact and publish these results in an appropriate manner.

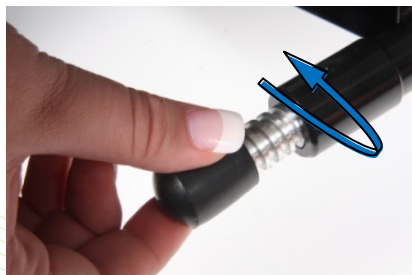
Fluteline Profile

Matthew Williams, Managing Director and his partner Karina Wilkinson have continued to run the business founded by Clive Williams in 2003. The have expanded the company producing high quality ergonomic office products

- Set the chair so that the forearms slope gently down towards the keyboard.
- Thighs should be parallel to the floor, with no pressure on the underside of the thighs at the front edge of the seat.
- The feet should be slightly forward of the knees.



All **Fluteline** Footrests are height and tilt adjustable



Turn the foot to adjust the height of the footrest.



Board Size: 450mm x 260mm

Adjustable height range: 40mm - 140mm



The small footrest is ideal for users with small desks.

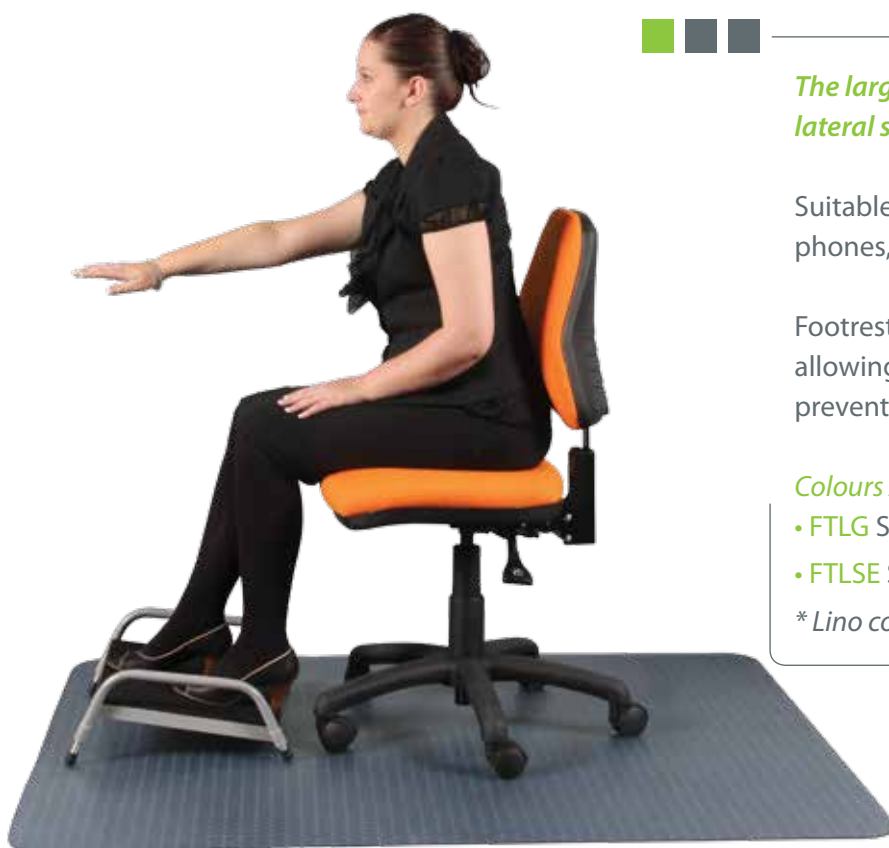
Footrests relieve pressure from the thighs allowing for better leg circulation, helping to prevent oedema and deep vein thrombosis.

Colours Available:

- FTG Satin Black frame with Grey carpet
- FTSE Silver Elite frame with Black carpet

* Lino covering available on request.





The large footrest allows for a better level of lateral seating stability.

Suitable for those who do a lot of reaching for phones, for example at reception desks .

Footrests help relieve pressure from the thighs allowing for better leg circulation, helping to prevent oedema and deep vein thrombosis .

Colours Available

- FTLG Satin Black frame with Grey carpet
- FTLSE Silver Elite frame with Black carpet

* Lino covering available on request.



Board Size: 450mm x 350mm

Adjustable height range: 40mm - 140mm

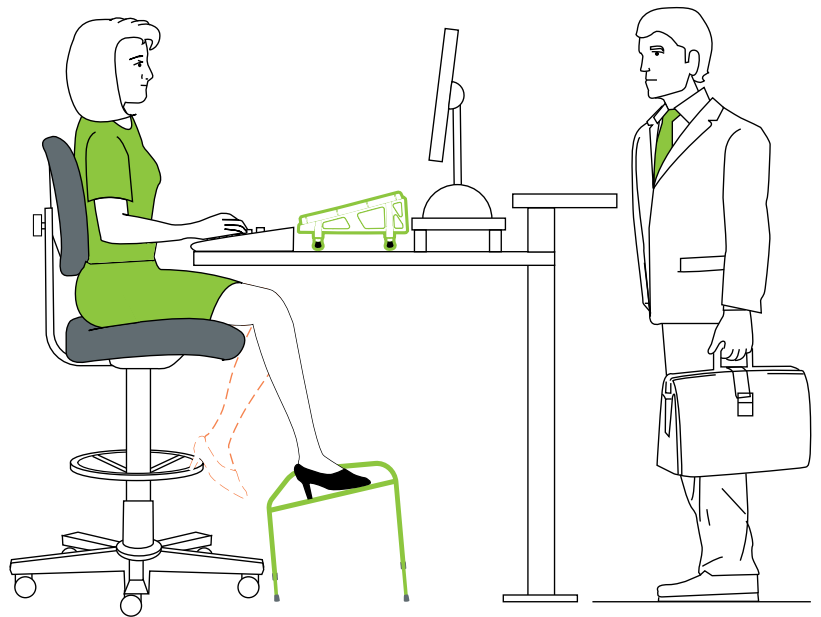


The tall footrest helps the user reduce and relieve the pressure on the thighs caused by the raised height of the chair.

When using a chair ring, the area behind the knee is wedged against the seat base cutting off the blood supply causing oedema and deep vein thrombosis.

Metal frame with ribbed commercial grade Decor carpet tiles on tread surfaces, available in grey, with the frame powdercoated in Satin Black.

- FTH300 Black frame with Grey carpet



Appropriate to use where the desk height is higher than normal, where the user has been brought up to be at eye contact with the client.

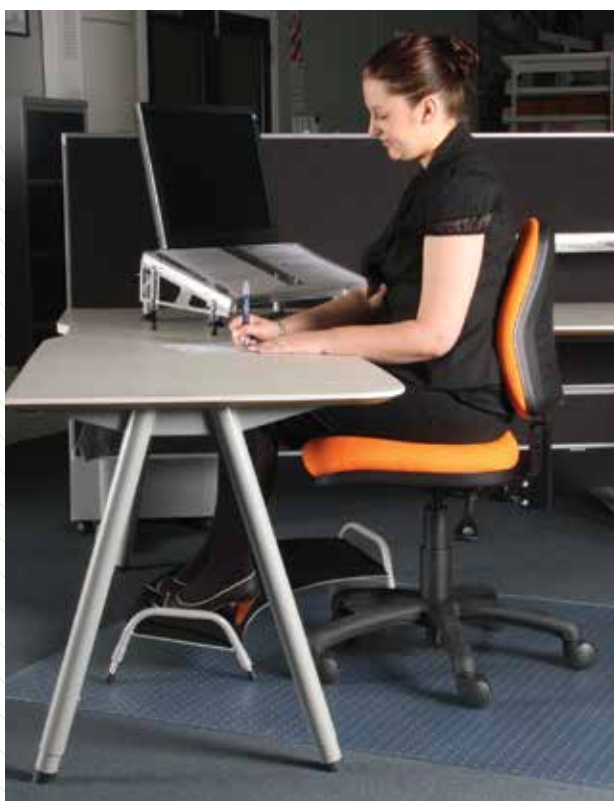


Vinyl covering and/or zinc plated available on request. Suitable for sterol environments. Zinc covering offers a higher resistance against chemicals.

Board Size: 450mm x 350mm
Adjustable height range: 250mm - 320mm



Board Size: 1000mm x 260mm
Adjustable height range: 60mm – 180mm



Helps to relieve pressure from thighs allowing for better circulation helping to prevent oedema and deep vein thrombosis.

The curve on the footrest follows the same radius as your chair. The middle support leg provides stability when moving around your work station.

Fluteline Curved Footrest

Models Available

- FTCVG Black frame Grey carpet
- FTCVSE Silver frame with Charcoal carpet

Specifications

- Board Size - 1000mm x 260mm
- Height and tilt adjustable range 60 to 180mm
- Ideal for reception counters
- Allows the operator to be supported when moving from computer to clerical tasks



Large Monitor Stand



Board Size: 290mm x 580mm

Height range: low from 65mm - 110mm

Height range: high from 120mm - 190mm

- There is enough space underneath for the user's keyboard or CPU, allowing space for clerical work.
- **Will hold any size monitor**

Models Available

- MSBKLG60 Black Large Low
- MSCHLG60 Charcoal Large Low
- MSBKLG Black Large High
- MSCHLG Charcoal Large High



Corner Monitor Stand



Board Size: 290mm x 290mm x 580mm

Height range: low from 65mm - 110mm

Height range: high from 120mm - 190mm

- **Will hold any size monitor**

Models Available

- MSBKCR60 Black Corner Low
- MSCHCR60 Charcoal Corner Low
- MSBKCR Black Corner High
- MSCHCR Charcoal Corner High



Small Monitor Stand



Board Size: 290mm x 290mm

Height range: low from 65mm - 110mm

Height range: high from 120mm - 190mm

- **Will hold any size monitor**

Models Available

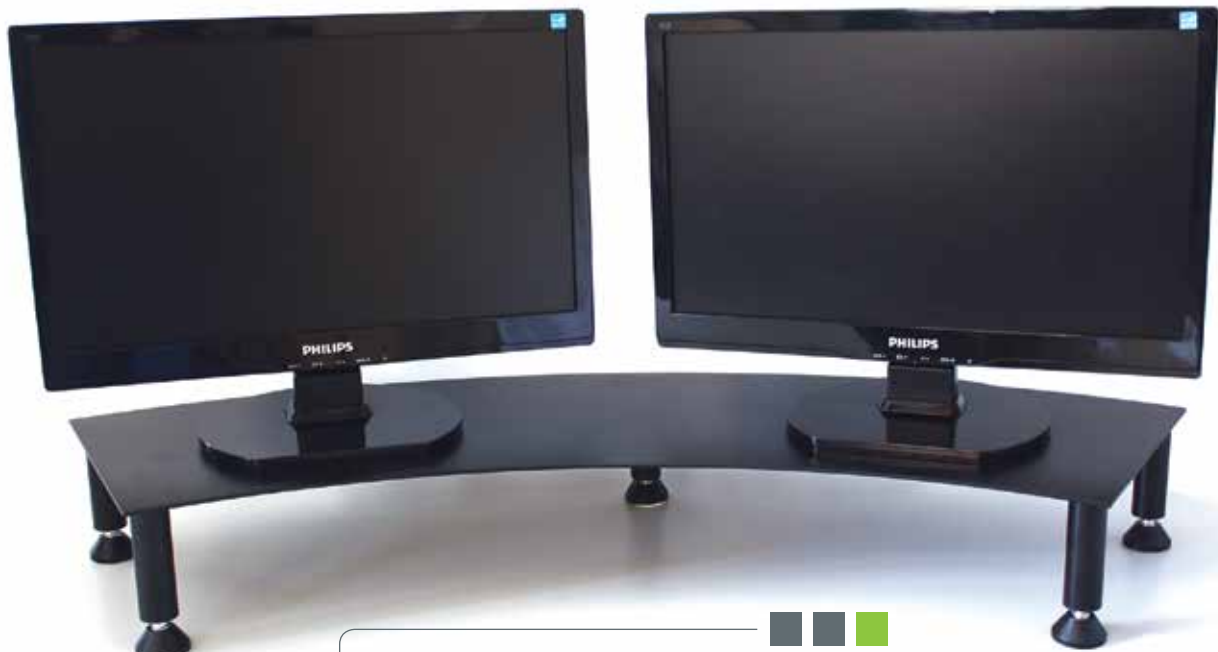
- MSBKSM60 Small Black Low
- MSCHSM60 Small Charcoal Low
- MSBKSM Small Black High
- MSCHSM Small Charcoal High



■ ■ ■ Fluteline Dual Adjustable Monitor Stand

Height Adjustable Ideal for Rectangular or Corner Desks.

Follows the natural rotation of the head maintaining the same focal length.



■ ■ ■
Board Size: 900mm x 260mm
Height range: low from 65mm - 110mm
Height range: high from 120mm - 190mm

■ ■ ■ *Features of the Fluteline New Dual Monitor Stand:*

- It can be used on a rectangular or corner desk as the curve follows the same rotational arc of the head.
- Great if you wear prescription glasses as you can set the distance for the correct focal length.
- Easy to install as the curve sets the correct angle of Monitors.
- Height adjustable on all 5 legs, Middle leg is to prevent the monitors tipping backwards.
- Manufactured in steel and powdercoated colours: *black watersilk, silver and charcoal.*
- Monitors in the photo are 19" wide screen.

Small Monitor

Board Size: (taken from widest points)

W 330mm x D 290mm

Height range: 120mm - 190mm

Low height option: 65mm - 110mm (made to order)

- Will hold any size monitor

Models Available

- ALMSBKSM Allevia Monitor Stand Small Black
- ALMSCHSM Allevia Monitor Stand Small Charcoal



Large monitor stand

Board Size: (taken from widest points)

W 590mm x D 290mm

Height range: 120mm - 190mm

Low height option: 65mm - 110mm

(made to order)

- Will hold any size monitor
- There is enough space underneath for the users keyboard, allowing space for clerical work.
- Cable holder on one side.

Models Available

- ALMSBKLG Allevia Monitor Stand Small Black
- ALMSCHLG Allevia Monitor Stand Small Charcoal

Dual Monitor Stand

Board Size: (taken from widest points)

W 870mm x D 290mm

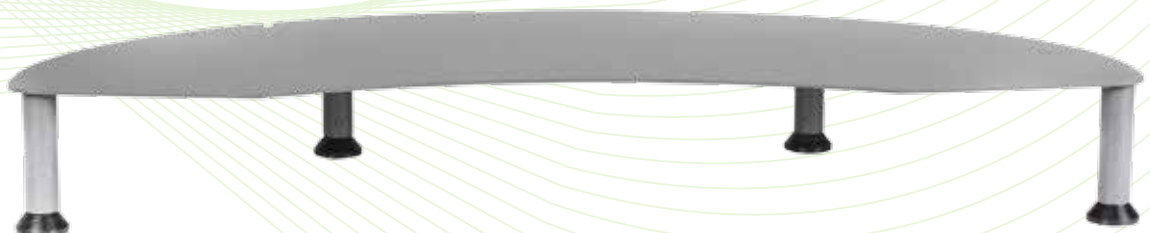
Height range: 120mm - 190mm

Low height option: 65mm - 110mm (made to order)

- Will hold 2 x monitors up to 24inch screens.
- There is enough space underneath for the users keyboard, allowing space for clerical work.
- Cable holders on both sides.

Models Available

- ALMSBKD Allevia Monitor Stand Small Black
- ALMSCHD Allevia Monitor Stand Small Charcoal





a)

a) Stationery Cabinet

- Six recessed shelves finished in powdercoating
- Free Standing or Wall mounted
- Dimensions: w360 x d220 x h275mm



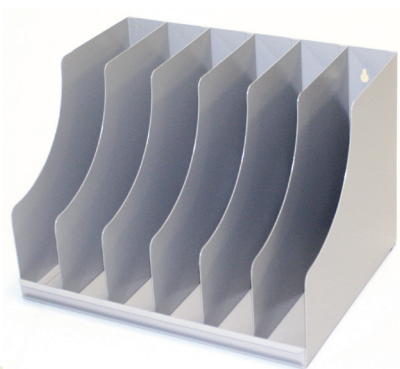
b)

b) 5 Tier Slope Back Letter Tray

- Trays slope back to stop loose papers falling out
- Designed to sit on your desk or wall mounted
- Dimensions: w385 x d210 x h330mm

c) Catalogue File Storage

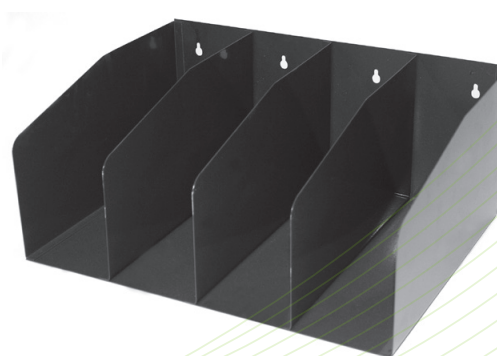
- 6 bay storage for catalogue files
- Wall mounted or free standing
- Front slot for labelling
- Dimensions: w330 x d260 x h230mm



c)

d) Lever Arch Storage

- Wall mounted or Free Standing
- Keeps your file upright and tidy
- Dimensions: w400 x d300 x h170mm



d)



Place in the middle of the desk slab end wall.

Height adjustable range 35mm to 120mm

- Available in two sizes Single leg, width 100mm & Double leg, width 600mm.
- Desk raisers are used to raise the height of the desk to a more suitable level in relation to the user.
- Raises an office desk to achieve correct working heights for taller operators; also allows working surfaces to be raised for standing operators.
- Comes with a packer, so the desk raiser won't damage the desk.



Drop the packer down here. Hand knobs - tighten these evenly.



Put legs on inside wall of desk to avoid walking into them.



How to set up your Fluteline Desk Raiser

- Make sure you have enough Desk Raisers for each slab end of your desk.
- Unwind all the alloy legs to the approximate desired height before you start fitting.
- Using a half empty water bottle will indicate whether your desk is level.



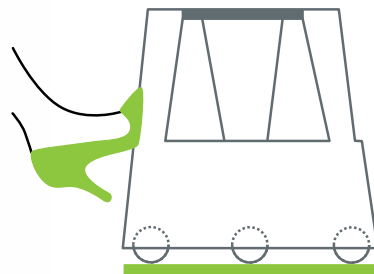
Sit on warm carpet surface.



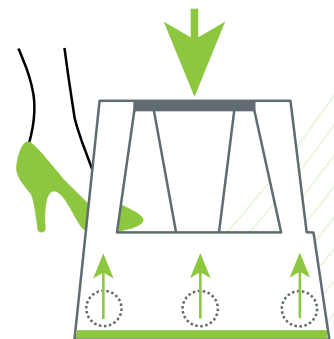
Step up in safety.



Stand and pick at eye level.



Stops when you stand.



Rolls with slight pressure.

The optimal range of storage is from the shoulder to knee. When we raise our arm above our shoulders we strain our neck and shoulder muscles.

Models Available

- RSG Grey with Grey carpet
- RMD Midnight Navy with Grey carpet



Standard Colour Range:

- FMD Navy
- FSL Silver
- FSTON Grey
- FBK Black
- FRD Red
- FBTk Tickle Pink
- FORAN Orange



Corporate Colours:

Order 50 or more Bins or a combination of Fluteline products and we will pay your set up charge for special colours. Smaller runs by arrangement please enquire.



Benefits of the Microdesk:

- Ensures a comfortable body posture when transferring hardcopy material onto the computer.
- Stops you reaching over papers to get to your keyboard.
- The clear working surface allows you to see directly down to the desk below depending on the paper positioning.
- Utilises space between keyboard and monitor screen.
- Allows easy access to keyboard and paperwork at all times.

Regular Microdesk - 560mm wide x 310mm deep

Most Popular model with 560mm wide writing platform.

Height rear 150mm, front 75mm with an extra 45 mm height adjustment possible.

- The MD platform top can be used with both Step and Regular sides depending on the rear height requirement.
- You can pull the MD towards you over the top of the keyboard if you are working on papers with no typing.
- Use the low paper ledge for writing in the centre of the platform or change to higher ledge if you have a stack of papers or folders in front of you.
- Do not write with your wrist over the higher paper ledge – use the flat surface to either side.

The Compact Microdesk - 430mm wide x 310mm deep

For use with a laptop on a docking station or a confined work area.

Height rear 150mm, front 75mm with an extra 45mm height adjustment possible.

- Designed for use with a laptop docking station and a mini keyboard (no numeric pad).
- You can use a regular sized keyboard but it will not slide between the front feet.
- Useful for a document holder in a confined work space.
- You can choose to use the step sides on this smaller platform if you want less rear height.
- 2 heights of paper ledge to choose from.

The Step Microdesk - 560mm wide x 310mm deep.

For use on keyboard tray or split level desk.

Height rear 80 mm, front 80 mm with extra 45mm height adjustment possible.

- Designed for use with keyboard tray style desk.
- Can also be used on a flat desk when the screen is positioned low on the desk.
- This may be because someone is short or because the screen is an extra large one.
- All keyboards fit between front legs.



Regular Microdesk



Compact Microdesk



Step Microdesk

- MICROREG Regular Microdesk
- MICROSTEP Step Microdesk
- MICROCOM Compact Microdesk

Fluteline Office Products Ltd.
15 Totara Street, Levin 5510
New Zealand

